

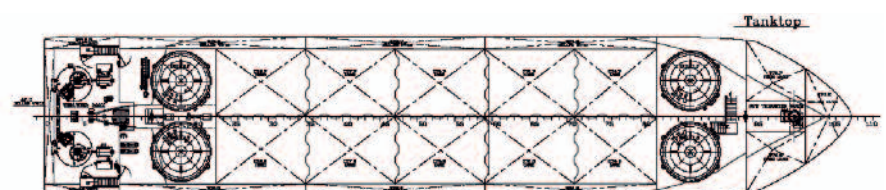
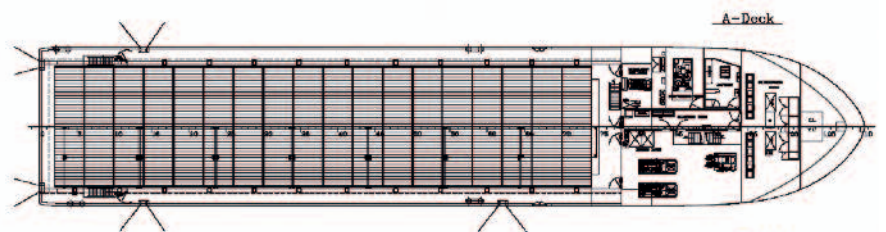
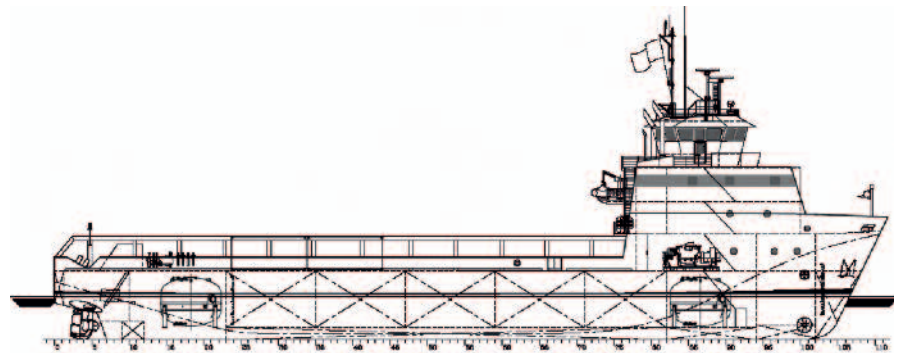
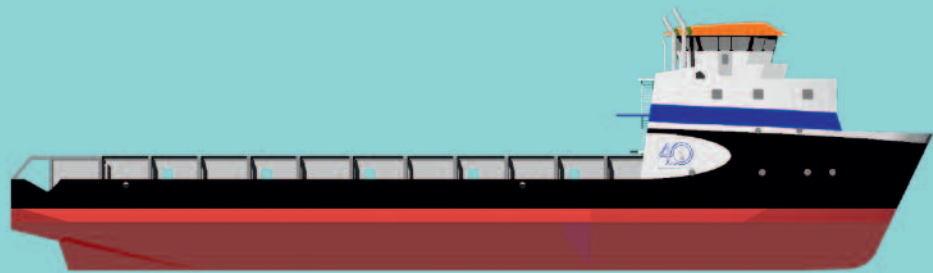
Platform Supply Vessel / Kiss Supplier

Designed for

- Offshore supply operations
- Onboard mud-preparation
- Mud-reception from platform
- Worldwide service
- Environmental friendly
- Compliant with latest rules (A.673)
- Simple construction

Main Features

- Diesel electric propulsion
- Generators on main deck
- Low fuel consumption
- High payload figures
- Redundant dynamic positioning
- Flexible cargo combinations
- 430 sq. m deck area
- 2000 ton deadweight
- 12 knot speed
- 30 person accommodation



Platform Supply Vessel / Kiss Supplier

Main particulars

Lenght o.a.	66.62 m (220 ft)
Lenght wl	64.45 m
Beam mld	12.80 m
Depth mld	5.50 m
Draft summer	4.65 m
Deadweight	2000 ton
Deck area	43.8 X 10.2 M 430 m ²
Deckload	800 ton @ 1.0 m

Performance

Trial speed	12 knots
Fuel consumption:	
Transit	10 ton / day
DP	2.5 ton / day
Endurance	> 30 days

Deck equipment

- Anchor windlass
- Deck cargo crane
- Fi-Fi system

Machinery

2* CAT C32	945 ekW
Total power	1890 kW
Harbour / Emergency	99 kW

Thrusters aft

2 Azimuth FPP	900 kW
---------------	--------

Thrusters fwd

Tunnel thruster	350 kW
-----------------	--------

Accommodation

Fully airconditioned
Accommodatin for 30 persons

- 2x 1 men cabin
 - 2x 2 men cabin
 - 6x 4 men cabin
 - Messroom
 - Dayroom
 - Laundry
 - Galley
 - Provision
 - Coldstore
- Navigation bridge with 360 degree view

Cargo discharge pumps

Fuel oil	80 m ³ / hr
Liquid product	100 m ³ / hr
Drill water	80 m ³ / hr
Bulk	50 ton / hr

Navigation / Dynamic Positioning

- 2 radars
- 2 Gyro's
- 1 Echosounder
- 1 Speed log
- 1 Inmarsat C
- 1 Autopilot
- 1 GPS
- 1 Epirb + transponders
- 1 AIS
- 1 Navtex
- 1 MF / HF radio, DSC
- 3 VHF

Navis DP1

Reference systems:

- DGPS 1 + 2
- Fan-beam

Tank Capacities

Fuel oil	980 m ³
Freshwater	160 m ³
Bulk	227 m ³
Brine	306 m ³
Mud	640 m ³
Drillwater	770 m ³

Mudtanks equipped with mud mixing and liquid circulation system

Rules & Regulations

Flag Mexican

Class notation Lloyds Register

+ 100 A1 Cargo vessel

+ LMC

+ DP (AM)

Unrestricted navigation

Latest Solas / Marpol regulations

Incl. IMO 673 (16)



Shipyards De Hoop

Bijlandseweg 17 – 19
6916 BH Tolkamer
P.O. Box 12, 6916 ZG Tolkamer
The Netherlands

P +31 (0)316 541641
F +31 (0)316 542322
Lobith@dehoop.net
www.dehoop.net