

# Platform Supply Vessel P20902

## Significant features:

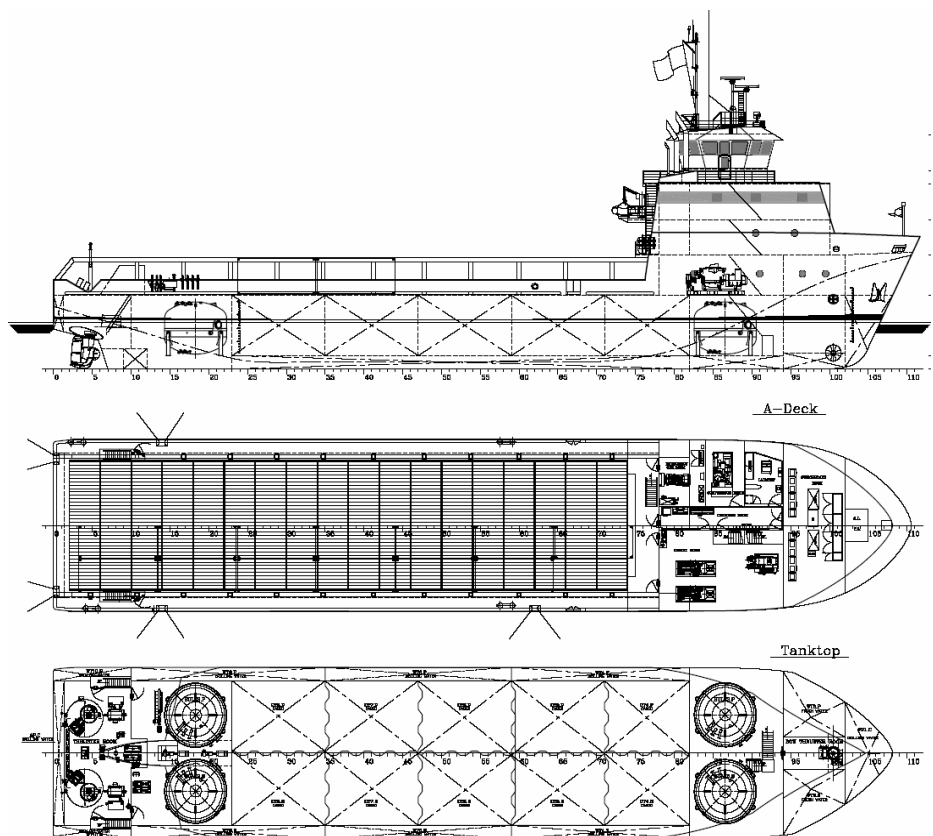
- Diesel electric propulsion
- Environmental friendly
- Low fuel consumption
- High payload
- Large tankcapacities
- Flexible cargo
- Compliant with A.673
- DP1
- Worldwide service

## Main Features:

- Large cargo deck: 430 m<sup>2</sup>
- Deadweight 2050 MT
- Max. speed 12.0 knots
- Accommodation up to 30 persons



Shipyard De Hoop  
*Designers & Builders*



# Platform Supply Vessel P20902

## Main particulars

Lenght o.a.: 67.00 m  
Length wl: 64.45 m  
Beam mld: 12.80 m  
Depth mld: 5.50 m  
Draft summer 4.65 m

Deadweight 2050 ton

Deck area 43.8 X 10.2 M  
430 m2

Deckload 800 ton @ 1.0 m

## Machinery

2\* CAT C32 945 ekW

Total power: 1890 kW

Harbour/Emergency: 99 kW

## Thrusters aft:

2 Azimuth FPP 900 kW

## Thrusters fwd:

Tunnel thruster 350 kW

## Navigation/Dynamic Positioning

2 radars  
2 Gyro's  
1 Echosounder  
1 Speed log  
1 Inmarsat C  
1 Autopilot  
1 GPS  
1 Epirb + transponders  
1 AIS  
1 Navtex  
1 MF/HF radio, DSC  
3 VHF

Navis DP1

Reference systems:

- DGPS 1 + 2
- Fan-beam



**Shipyard DeHoop**  
*Designers & Builders*

## Performance

Trial speed 12 knots

Fuel consumption:

Transit : 10 ton/day  
DP : 2.5 ton/day

Endurance > 30 days

## Accommodation

Fully airconditioned

Accommodation for 30 persons

- 2x 1 men cabin
- 2x 2 men cabin
- 6x 4 men cabin

- 
- Messroom
- Dayroom
- Laundry
- Galley
- Provision
- Coldstore

Navigation bridge with 360 degree view

## Tank Capacities

Fuel oil	322 m3
Freshwater	116 m3
Bulk	227 m3
Liq.cargo	1590 m3
Drillwater	560 m3

Liquid cargo tanks suitable for liquids up to sg. 2.0 kg/m2.

Incl. 4 mud tanks 640 m3 equipped with mud mixing and liquid circulation system

## Deck equipment

- Anchor windlass
- Deck cargo crane
- Fi-fi system

## Cargo discharge pumps

Fuel oil	80 m3/hr
Liquid product	100 m3/hr
Drill water	80 m3/hr
Bulk	50 ton/hr

## Rules & Regulations

Flag: Mexican  
Class notation:  
Lloyds Register  
+ 100 A1 Cargo vessel  
+ LMC  
+ DP (AM)

Unrestricted navigation  
Latest Solas /Marpol regulations  
Incl. IMO 673 (16)

**Postal address:**  
P.O. Box 12, 6916 ZG Tolkamer,  
The Netherlands

**Visit address:**  
Bijlandseweg 17-19, 6916 BH,  
Tolkamer, The Netherlands

Phone: +31 316 54 16 41  
Fax: +31 316 54 23 22

E-mail: [lobith@dehoop.net](mailto:lobith@dehoop.net)  
URL : [www.dehoop.net](http://www.dehoop.net)